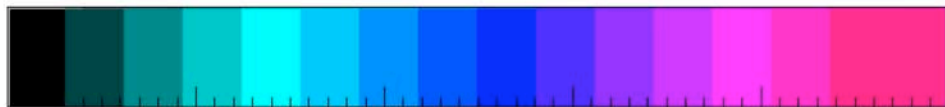
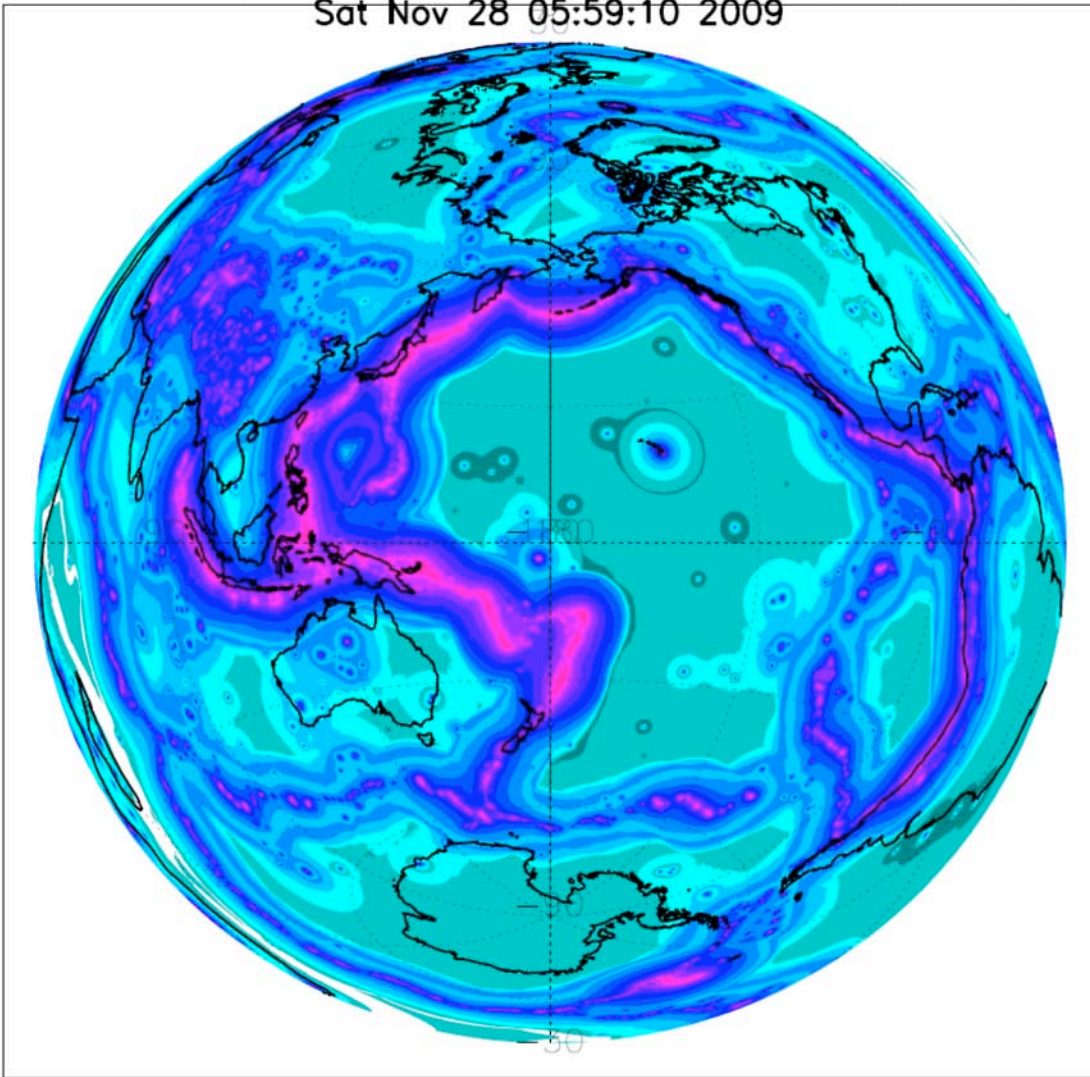


GLOBAL EARTHQUAKE FORECASTS

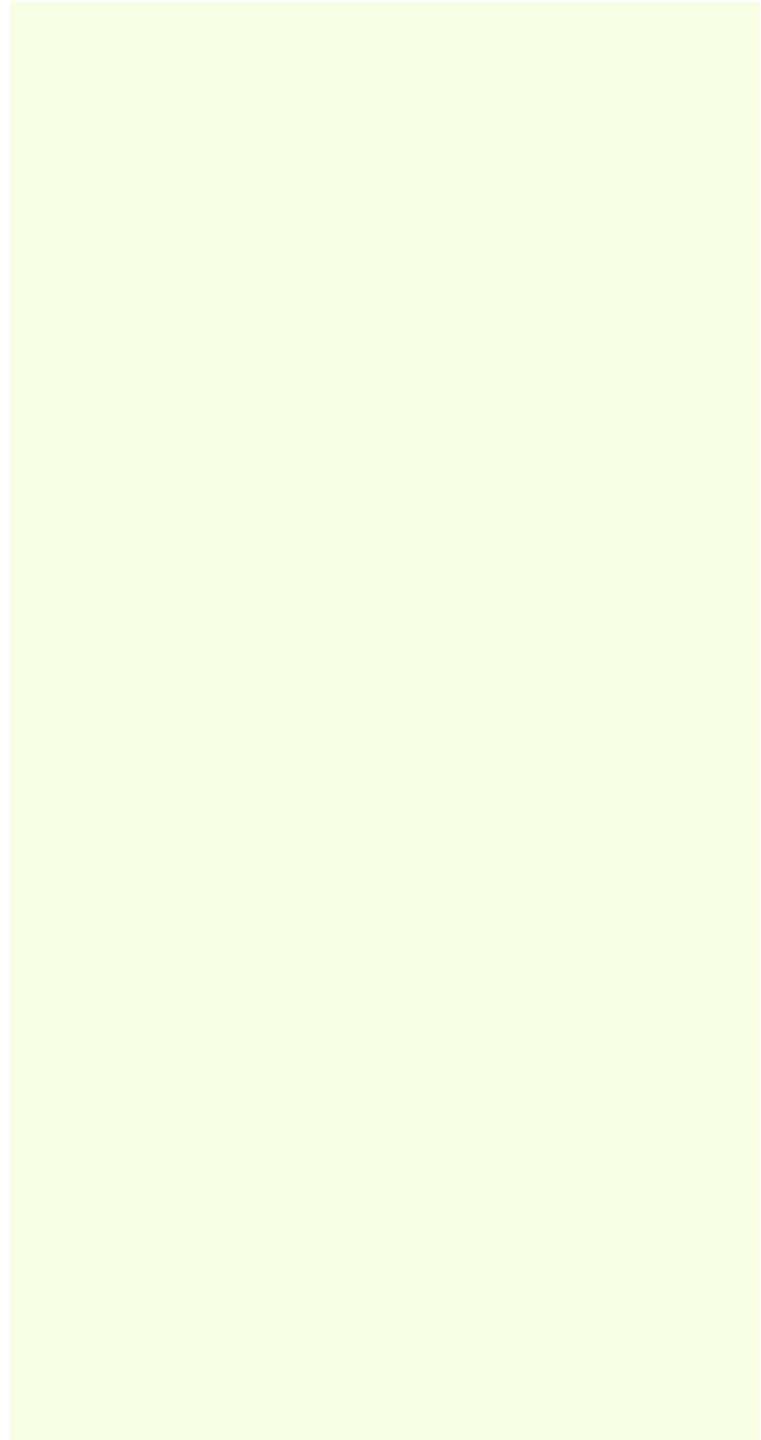
Yan Y. Kagan and David D. Jackson

*Department of Earth and Space Sciences, University of California
Los Angeles*

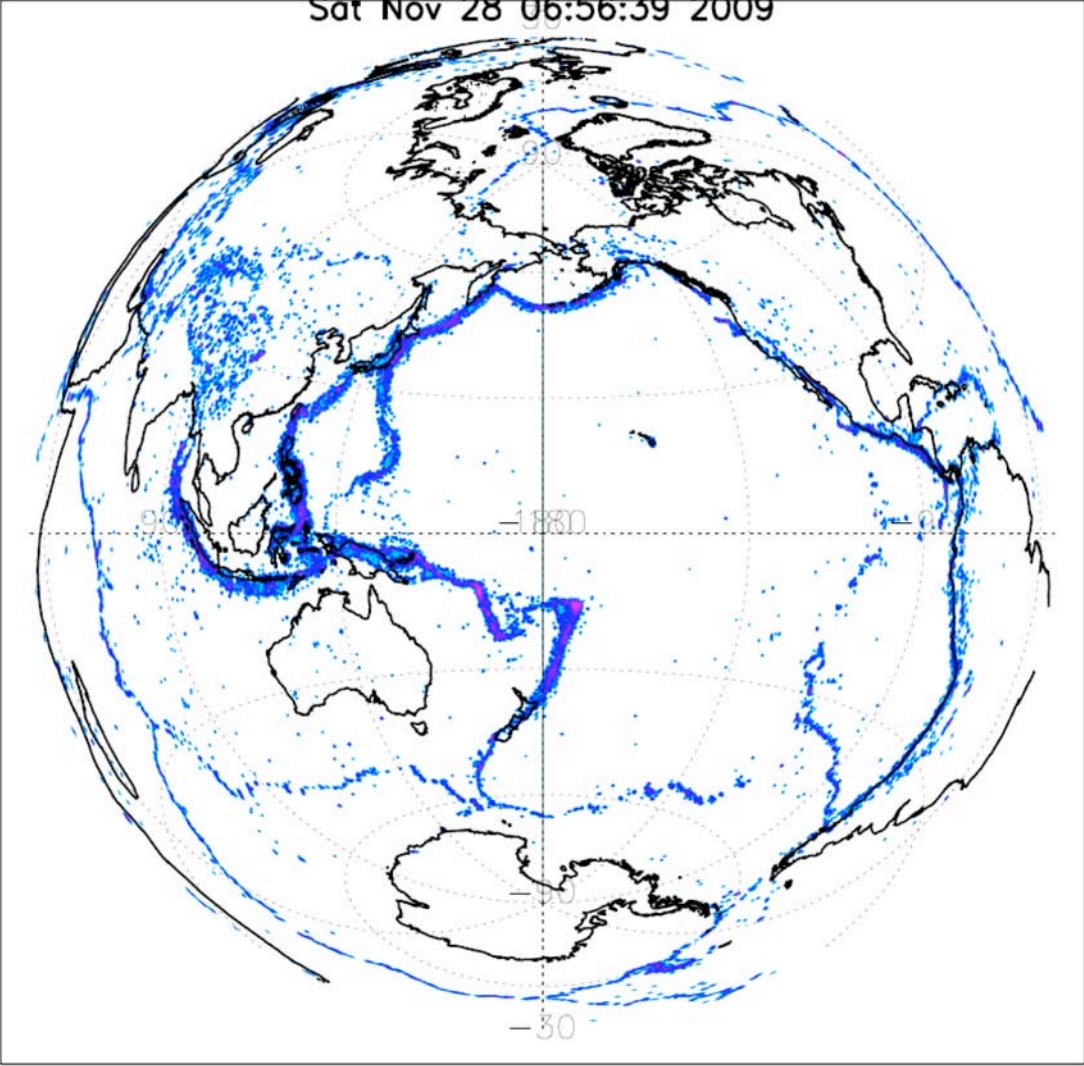
Global Long-term Forecast, PDE 1969-Today, full sphere, 0.1 deg
Sat Nov 28 05:59:10 2009



-7 -6 -5 -4 -3 -2
Log₁₀ probability of earthquake occurrence, M > 5.0, eq/day*(100km)²



Global Short-term Forecast, PDE 1969-Today, full sphere, 0.1 deg
Sat Nov 28 06:56:39 2009



\log_{10} probability of earthquake occurrence, $M > 5.0$, eq/day*(100km)²



Fig. 1: CMT (M>7.0 pairs, R<250km), Cumulative distribution

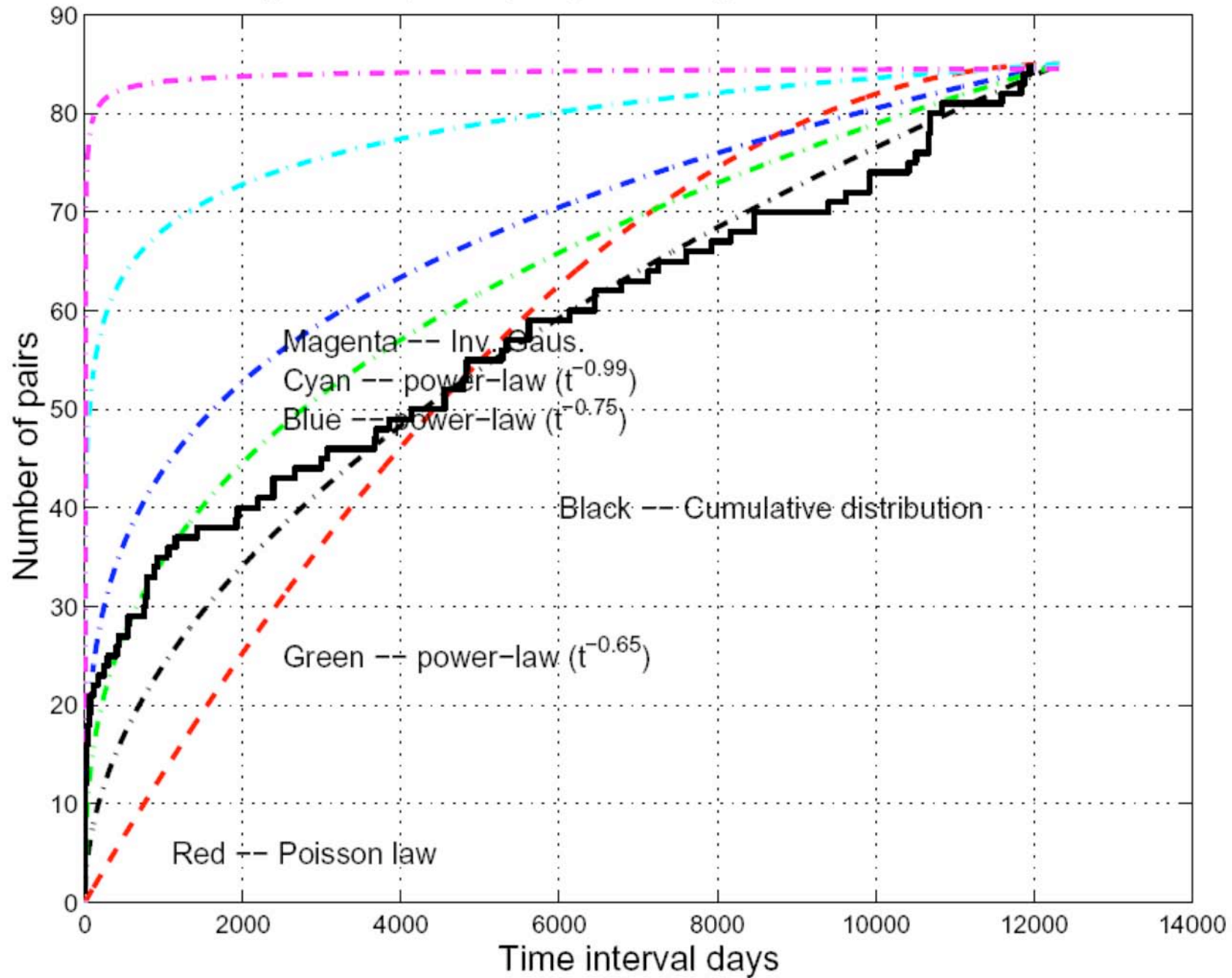


Fig. 1: CMT (M>7.5 pairs, R<250km), Cumulative distribution

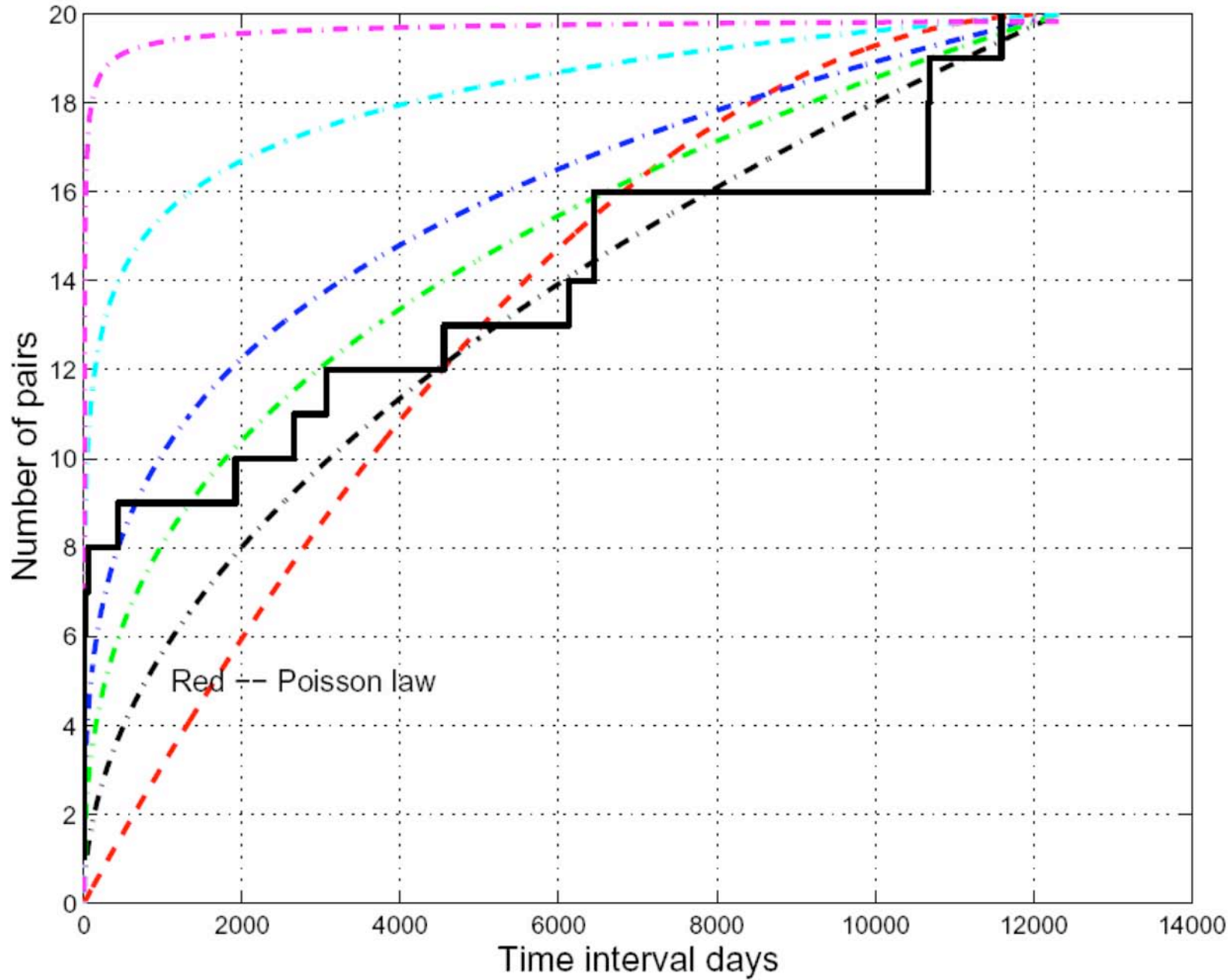
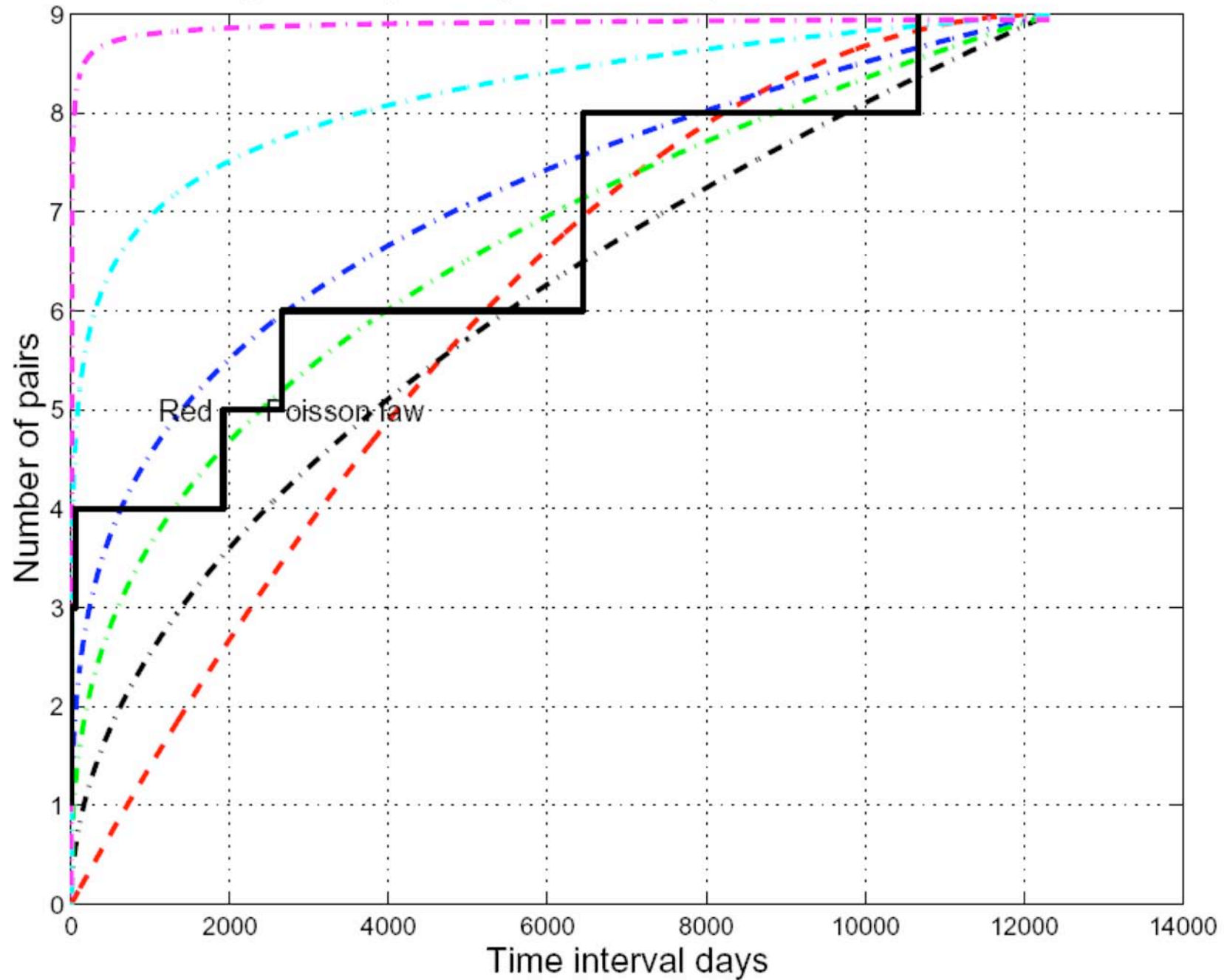


Fig. 1: CMT ($M > 7.75$ pairs, $R < 250\text{km}$), Cumulative distribution



Aftershocks vs moment, all earthquakes ($M_w > 7.0$, 1977–2008)

