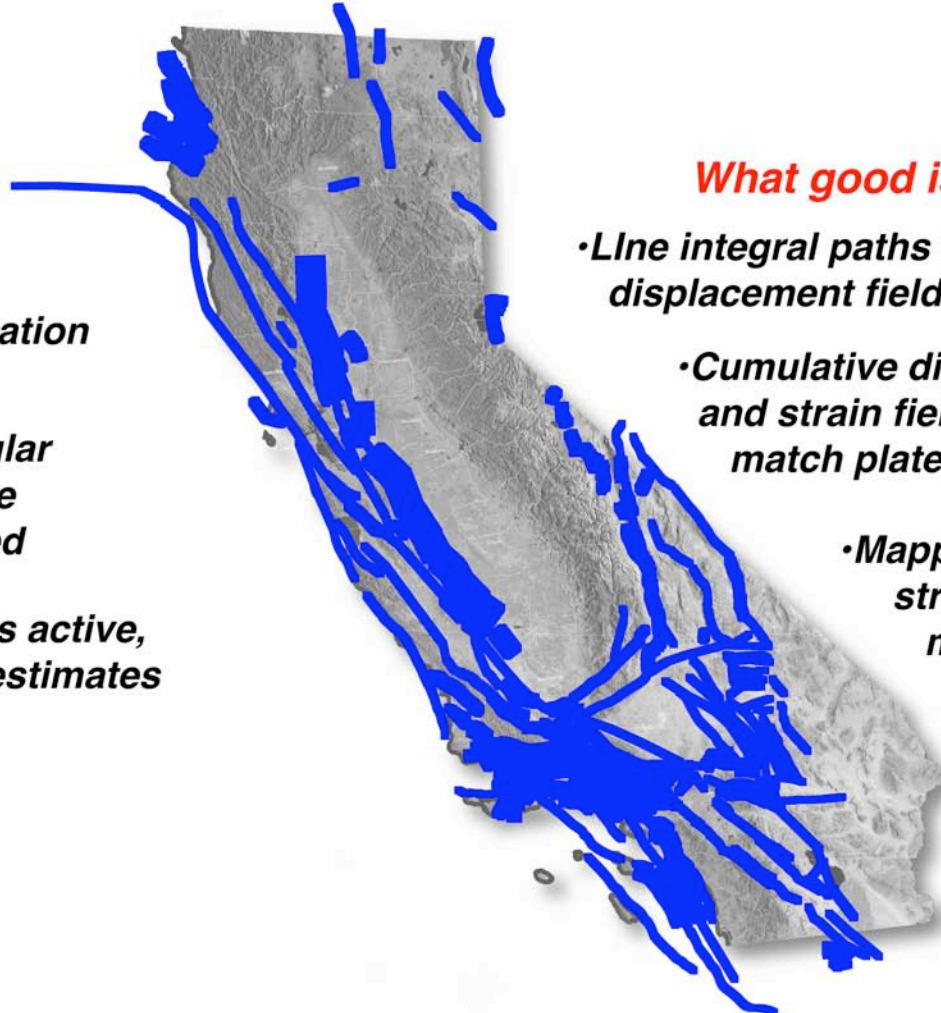


**Test tools for UCERF2 A&B fault and deformation models:  
Elastic dislocation models (Okada formulation)**

---

**What is it?**

- 241 Defined faults
- 2.5 x 2.5 km dislocation patches
- Currently rectangular patches, but can be triangular if needed
- 76 faults defined as active, but lack slip-rate estimates

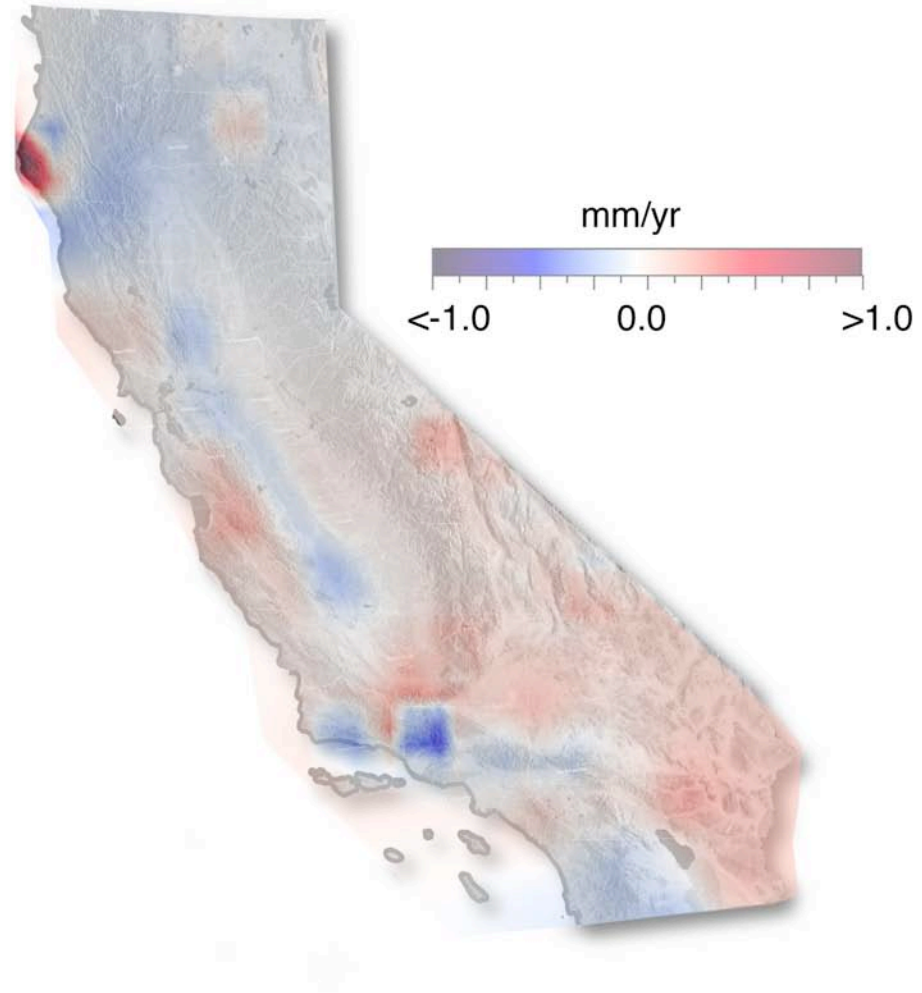


**What good is it?**

- Line integral paths through displacement field should close
- Cumulative displacement and strain fields should match plate boundary rates
- Mapped stress and strain anomalies might identify kinematic problems

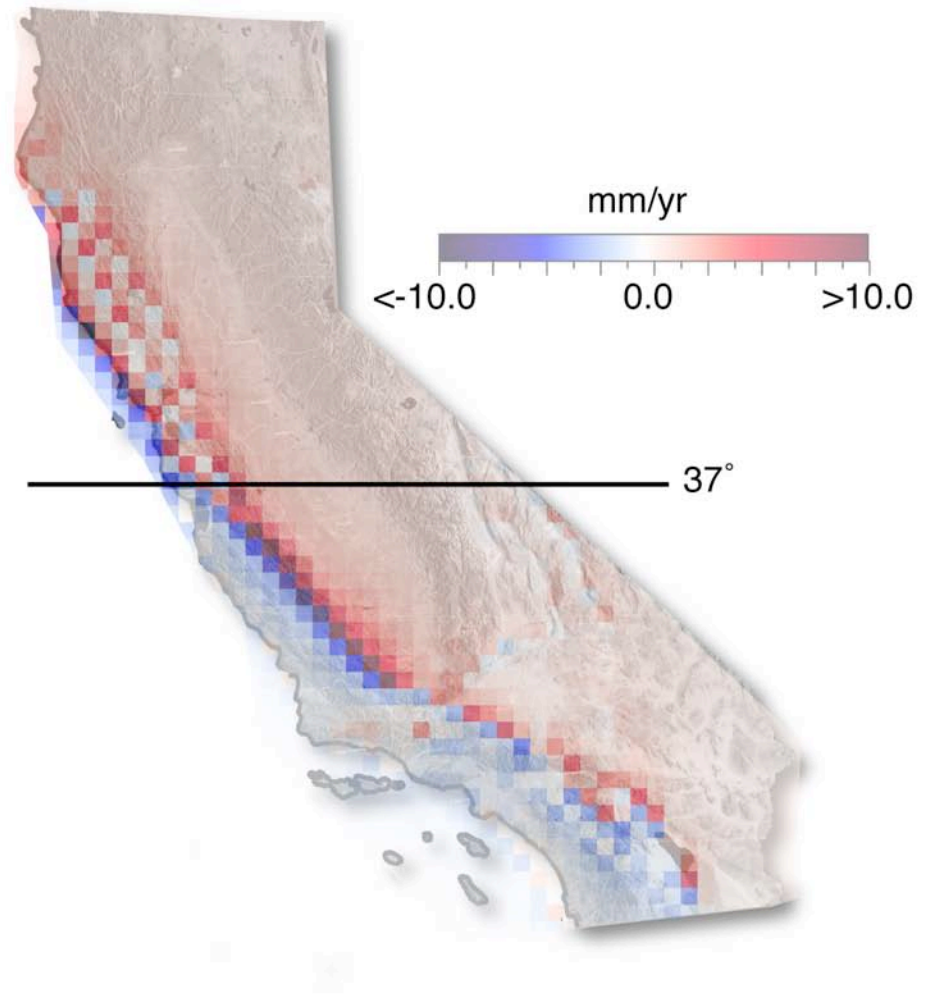
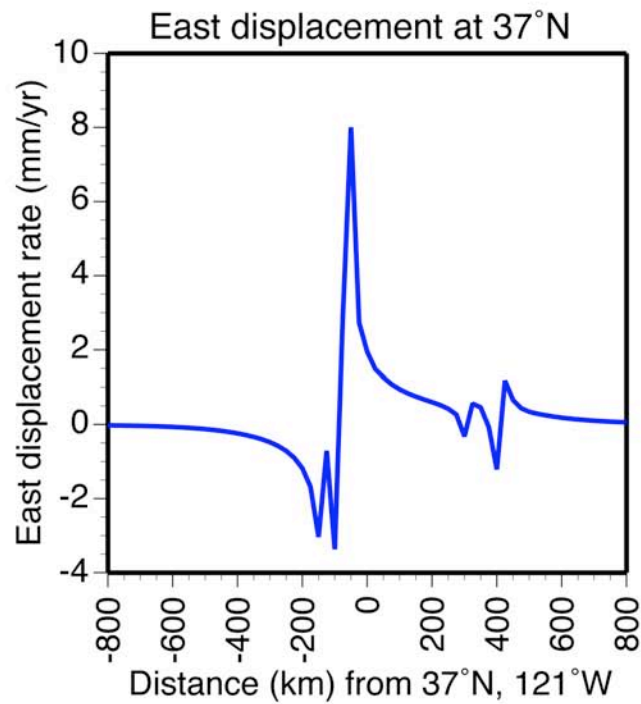
**Testing the UCERF 2 Fault and deformation models:  
Calculated vertical displacement rates**

---



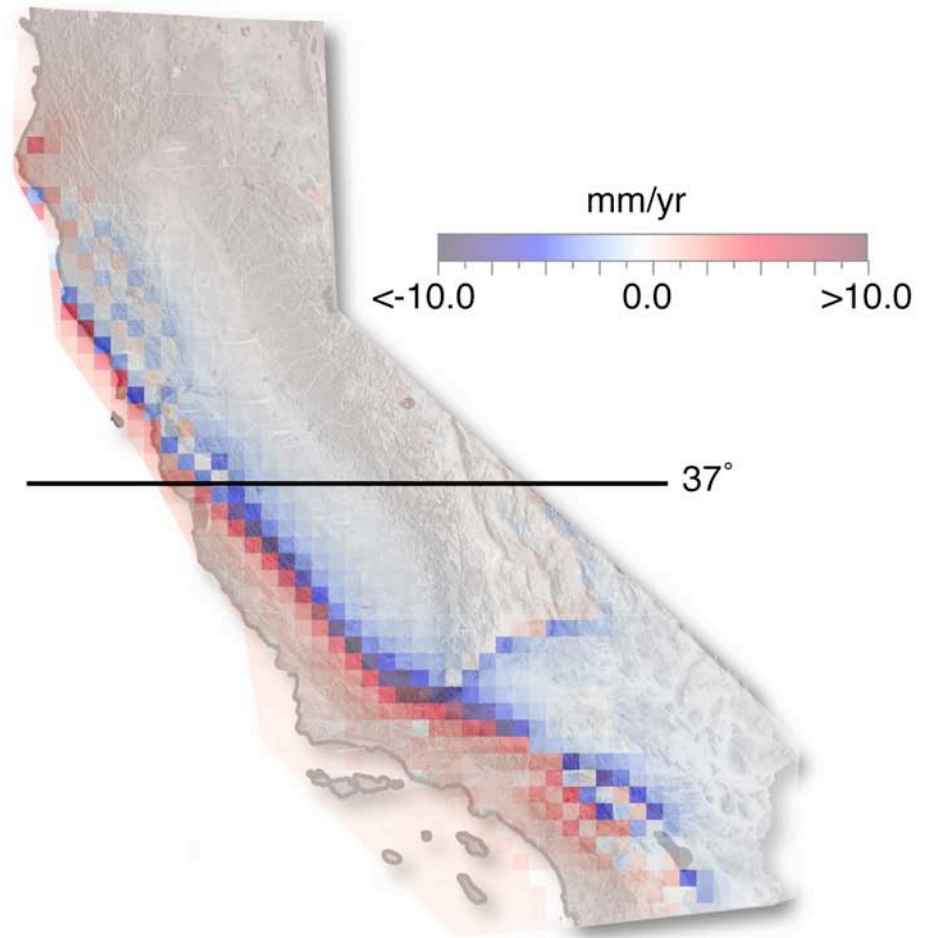
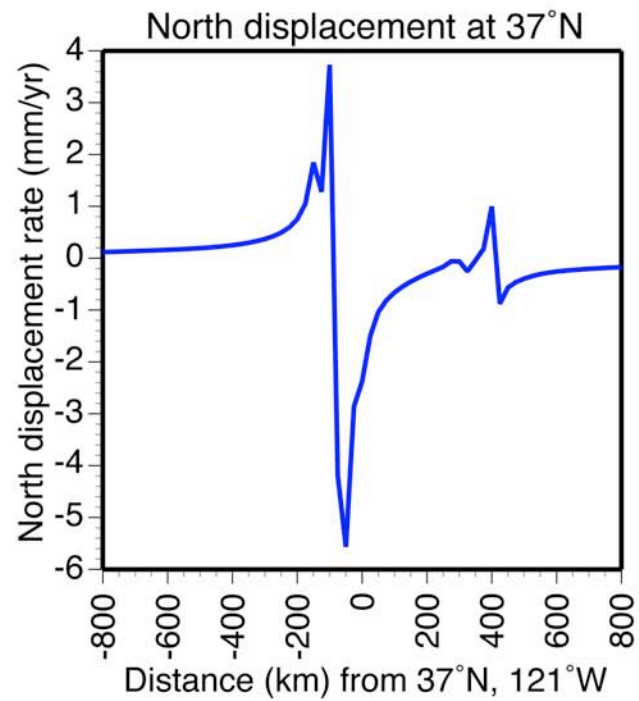
**Testing the UCERF2 fault and deformation models:  
Calculated east displacement rates**

---



**Testing the UCERF 2 Fault and deformation models:  
Predicted north displacement rates**

---

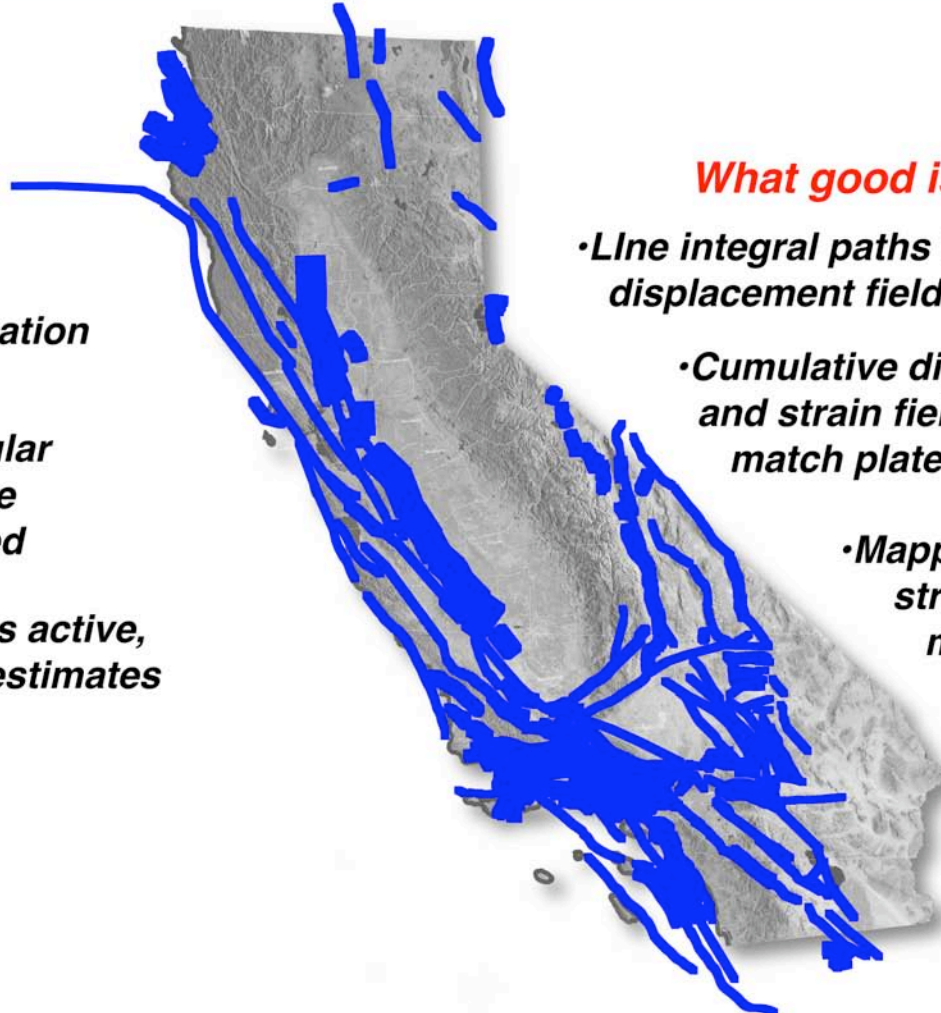


**Test tools for UCERF2 A&B fault and deformation models:  
Elastic dislocation models (Okada formulation)**

---

**What is it?**

- 241 Defined faults
- 2.5 x 2.5 km dislocation patches
- Currently rectangular patches, but can be triangular if needed
- 76 faults defined as active, but lack slip-rate estimates



**What good is it?**

- Line integral paths through displacement field should close
- Cumulative displacement and strain fields should match plate boundary rates
- Mapped stress and strain anomalies might identify kinematic problems